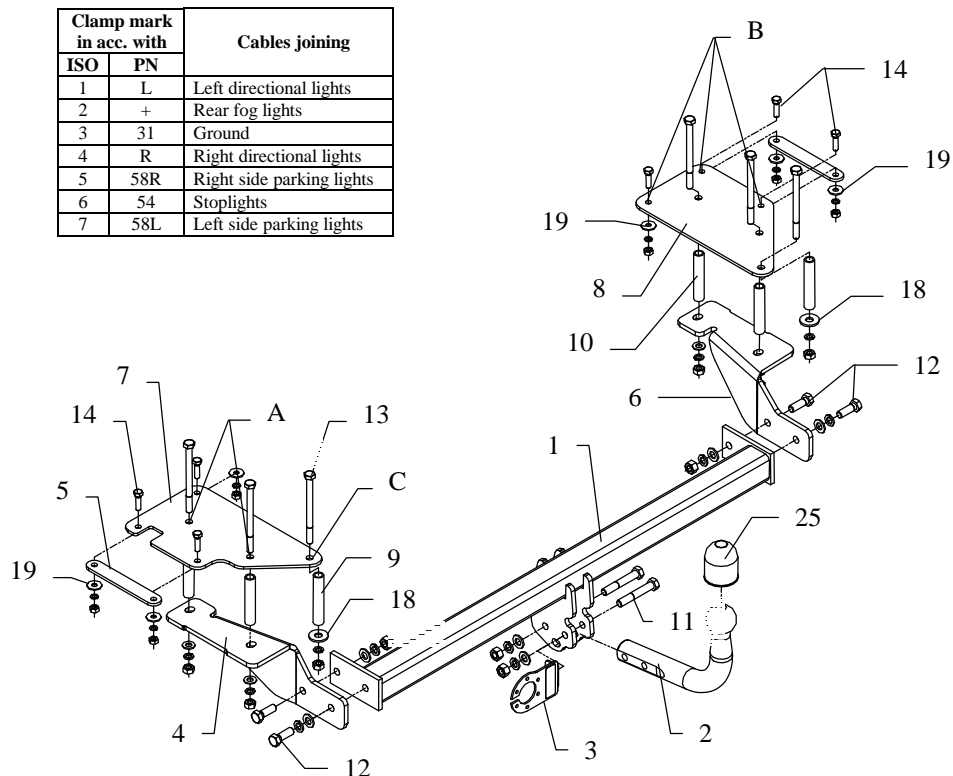


## FITTING INSTRUCTION

Clamp mark in acc. with		Cables joining
ISO	PN	
1	L	Left directional lights
2	+	Rear fog lights
3	31	Ground
4	R	Right directional lights
5	58R	Right side parking lights
6	54	Stoplights
7	58L	Left side parking lights



This towbar is designed to assembly in following car:

**FIAT MULTIPLA**, catalogue no. **R26**, produced since 1998 till 12.2004 and is prepared to tow trailers max total weight up to **1300 kg** and max vertical load **70 kg**.

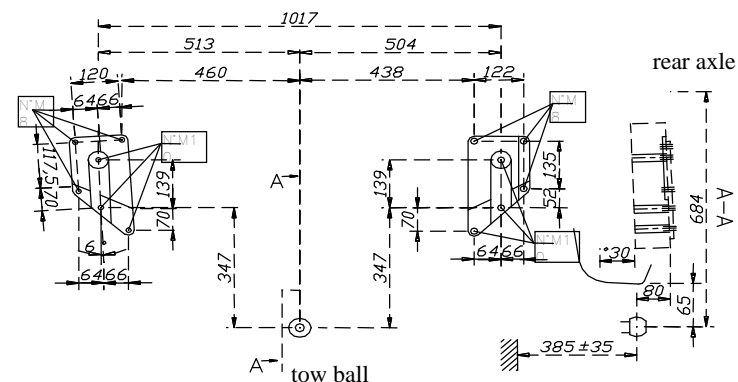
*From manufacturer*

Thank you for buying our product. Their reliability has been confirmed in many tests. Reliability of towbar depends also on correct assembly and correct exploitation. For this reasons we kindly ask to read carefully this instruction and apply to hints.

*The towbar should be install in points described by a car producer.*

## The instruction of the assembly

1. Remove fitted carpet and anti-noise mat from the trunk.
2. Take out a spare wheel. Get lower the muffler, take him out from last handle. Disassemble a rear bumper.
3. Inside trunk find four original marked points (two per each side). Drill it using bit  $\varnothing 10,5\text{mm}$ .



4. On drilled holes put fish-plates (pos. 7 and 8). Holes pos. A on drilled holes.
5. Mark rest holes of the fish-plates and drill it:
  - holes B using bit  $\varnothing 9\text{mm}$
  - holes C using bit  $\varnothing 10,5\text{mm}$
6. Holes A and C drill again using bit  $\varnothing 17,5\text{mm}$  only from inside of trunk. To this holes put distance sleeves as shown on figure 2.
7. On in this way prepared places put elements 7 and 8, by holes A and C put bolts M10x130mm (pos. 13).
8. Underneath the car, on protruding bolts put elements 4 and 6 and fix it loosely.
9. Between element 4 and 6 put main bar of the towbar (pos. 1) and fix it using bolts M12x35mm (pos. 12).
10. By holes B in elements 7 and 8 put bolts M8x30mm (pos. 14) and fix with plate (pos. 5), use washers pos. 19.
11. Fix tow-ball (pos. 2) and socket plate (pos. 3) using bolts M12x75 mm (pos. 11) from accessories.
12. Tighten all bolts according to the torque shown in the table.
13. Connect electric wires of 7-poles socket according to the instruction of the car. (Recommend to make at authorized service station)
14. Complete paint layer damaged during installation.

Torque settings for nuts and bolts (8,8):

<b>M 8</b>	25 Nm	<b>M 10</b>	55 Nm
<b>M 12</b>	85 Nm	<b>M 14</b>	135 Nm

## Towbar accessories:

Pos. 1 Name: Main bar Quantity: 1	Pos. 7 Name: Plate bracket Quantity: 1	Pos. 12 Name: Bolt 8,8 B Quantity: 4 Dim.: M12x35mm	Pos. 19 Name: Washer Quantity: 6 Dim.: Ø24xØ8,4x2mm
Pos. 2 Name: Tow ball Quantity: 1	Pos. 8 Name: Plate bracket Quantity: 1	Pos. 13 Name: Bolt 8,8 B Quantity: 6 Dim.: M10x130mm	Pos. 20 Name: Plain washer Quantity: 6 Dim.: Ø 13 mm
Pos. 3 Name: Socket plate Quantity: 1	Pos. 9 Name: Distance sleeve Quantity: 2	Pos. 14 Name: Bolt 8,8 B Quantity: 7 Dim.: M8x30	Pos. 21 Name: Plain washer Quantity: 4 Dim.: Ø 10,5 mm
Pos. 4 Name: Left bracket Quantity: 1	Pos. 10 Name: Distance sleeve Quantity: 4	Pos. 15 Name: Nut 8 B Quantity: 4 Dim.: M12	Pos. 22 Name: Spring washer Quantity: 6 Dim.: Ø 12,2 mm
Pos. 5 Name: Plate Quantity: 2	Pos. 11 Name: Bolt 8,8 B Quantity: 2 Dim.: M12x75mm	Pos. 16 Name: Nut 8 B Quantity: 6 Dim.: M10	Pos. 23 Name: Spring washer Quantity: 6 Dim.: Ø 10,2 mm
Pos. 6 Name: Right bracket Quantity: 1	Pos. 17 Name: Nut 8 B Quantity: 6 Dim.: M8	Pos. 18 Name: Washer Quantity: 2 Dim.: Ø37xØ13x3mm	Pos. 24 Name: Spring washer Quantity: 6 Dim.: Ø 8,2 mm
			Pos. 25 Name: Ball cover Quantity: 1

## NOTE

After install the towbar You should get adequate note in registration book (at authorised service station).The car should be equipped with:

- Indicators
- Tow mirrors

After 1000km of exploitation check all bolts and nuts. The ball of towbar must be always kept clear and conserve with a grease.



## PPUH AUTO-HAK S.J.

Produkcja Zaczepów Kulowych  
Henryk & Zbigniew Nejman  
76-200 SŁUPSK ul. Słoneczna 16K  
tel/fax (059) 8-414-414; 8-414-413  
E-mail: office@autohak.com.pl  
www. autohak.com.pl

## Towing hitch (without electrical set)

Class: **A50-X** Cat. no. **R26**

Designed for:

Manufacturer: **FIAT**

Model: **MULTIPLA**

produced since 1998 till 12.2004

Approval number according to Directive 94/20/EC: **e20\*94/20\*0503\*00**

Technical data:

**D-value: 7,8 kN**

maximum trailer weight: **1300 kg**

maximum vertical cup load: **70 kg**

## Foreword

This towbar is design according to rules of safety traffic regulations. The towing hitch is a safety component and must be installed only by qualified personnel. Any alteration or conversion to the towing hitch is prohibited and would lead to cancellation of design certification. Remove insulating compound and underseal from vehicle (if present) in the area of the matting surfaces of the towing hitch. The vehicle manufacturer's specifications regarding trailer load and max. vertical cup load are decisive for driving, and values for the towing hitch cannot be exceeded.

D-value formula:

$$\frac{\text{Max trailer weight [kg]} \times \text{Max vehicle weight [kg]}}{\text{Max trailer weight [kg]} + \text{Max vehicle weight [kg]}} \times \frac{9,81}{1000} = D \text{ [kN]}$$