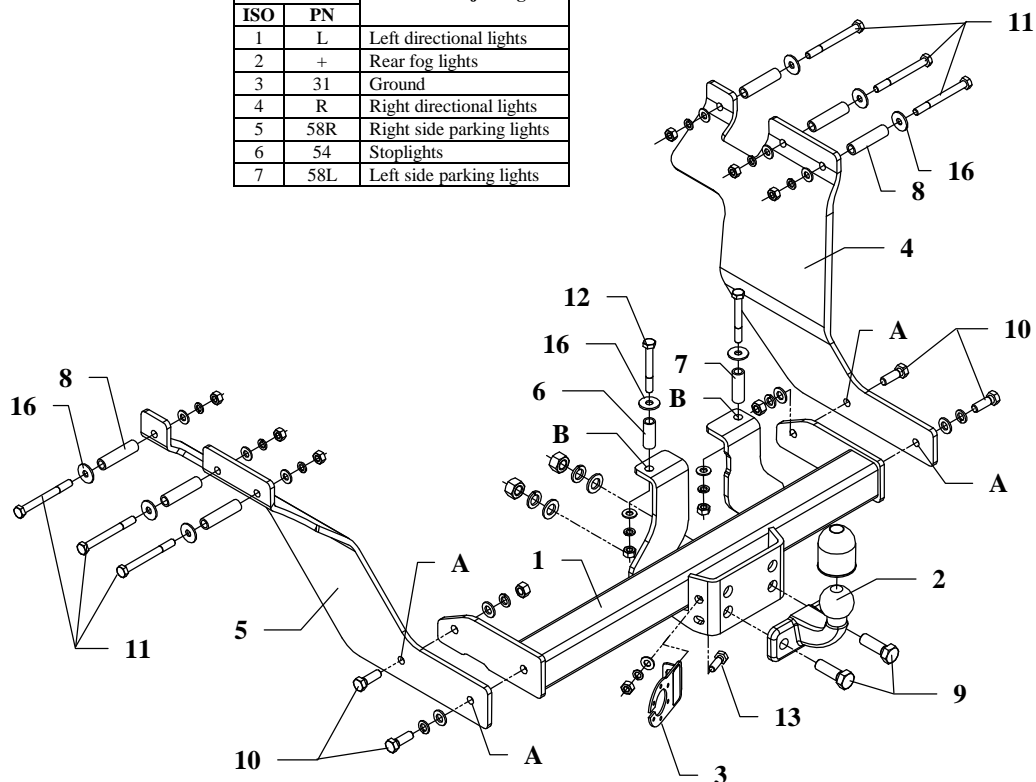


FITTING INSTRUCTION

| Clamp mark in acc. with | | Cables joining |
|-------------------------|-----|---------------------------|
| ISO | PN | |
| 1 | L | Left directional lights |
| 2 | + | Rear fog lights |
| 3 | 31 | Ground |
| 4 | R | Right directional lights |
| 5 | 58R | Right side parking lights |
| 6 | 54 | Stoplights |
| 7 | 58L | Left side parking lights |



This towing hitch is designed to assembly in following cars: **KIA PREGIO**, produced since 1997, catalogue no. **T12** and is prepared to tow trailers max total weight **1500 kg** and max vertical mass **70 kg**.

From manufacturer

Thank you for buying our product. Their reliability has been confirmed in many tests. Reliability of towing hitch depends also on correct assembly and right operation. For this reasons we kindly ask to read carefully this instruction and apply to hints.

The towing hitch should be installed in points described by a car producer.

The instruction of the assembly

1. Disassemble a bumper and a spare wheel.
2. Underneath a car, on the left side put left bracket (pos. 5) and on the right side right bracket (pos. 4) in this way, so cut of the bracket embrace chassis member and head of the bracket touch chassis of car. Mark holes from the brackets on the chassis members and drill using bit $\varnothing 11\text{mm}$ (holes make very carefully). From out side enlarge made holes by but $\varnothing 17\text{mm}$.
3. In this way prepared places slip distance sleeves $\varnothing 17$, $L=67\text{mm}$ (pos. 8), put bolts M10x100mm (pos. 11) with big washers (pos. 16), as shown on the figure. Fix loosely.
4. Between mounted side brackets put main bar of the towbar (pos. 1) and through holes pos. A fix by bolts M12x35mm (pos. 10).
5. Through holes pos. B drill $\varnothing 11\text{mm}$ and next in upper part enlarge using bit $\varnothing 17\text{mm}$.
6. In this way prepared places put distance sleeve $\varnothing 17$, $L=43\text{mm}$ (pos. 6) on the left side and $\varnothing 17$, $L=50\text{mm}$ (pos. 7) on the right side and next fix by bolts M10x80mm (pos. 12) as shown on the figure.
7. Reassemble a bumper.
8. Fix tow ball (pos. 2) by two bolts M16x50mm (pos. 9).
9. Fix socket plate (pos. 3) by bolt M10x30mm (pos. 13) as shown on the figure.
10. Tighten all bolts according to the torque shown in the table.
11. Connect electric wires of 7-poles socket according to the instruction of the car. (Recommend to do at authorized service station).
12. Complete paint layer damaged during installation.

Torque settings for nuts and bolts (8,8):

| | | |
|--------------------|---------------------|--------------------|
| M6 - 11 Nm | M8 - 25 Nm | M10 - 50 Nm |
| M12 - 87 Nm | M14 - 138 Nm | M16 - 210 |

NOTE

After installation of the towing hitch you should get adequate note in registration book (at authorised service station).The car should be equipped with:

- Indicators
- Tow mirrors

Check all bolts and nuts after **1000 km** of exploitation. The ball of the towing hitch must be always kept clear and conserve with a grease.

Part list:

| | | | |
|------------------------------------|--|---|--|
| Pos. 1 Main bar PCS.: 1 | Pos. 6 Distance sleeve I ø17,2x2,35mm L=43mm PCS.: 1 | Pos. 12 Bolt 8,8 B M10x80mm PCS.: 2 | Pos. 18 Spring washer ø16,3mm PCS.: 2 |
| | Pos. 7 Distance sleeve II ø17,2x2,35mm L=50mm PCS.: 1 | Pos. 13 Bolt 8,8 B M10x30mm PCS.: 1 | Pos. 19 Spring washer ø12,2mm PCS.: 4 |
| Pos. 2 Tow ball PCS.: 1 | Pos. 8 Distance sleeve III ø17,2x2,35mm L=67mm PCS.: 6 | Pos. 14 Plain washer ø17mm PCS.: 2 | Pos. 20 Spring washer ø10,2mm PCS.: 9 |
| Pos. 3 Socket plate PCS.: 1 | Pos. 9 Bolt 8,8 B M16x50mm PCS.: 2 | Pos. 15 Plain washer ø13mm PCS.: 4 | Pos. 21 Nut 8 B M16 PCS.: 2 |
| Pos. 4 Right bracket PCS.: 1 | Pos. 10 Bolt 8,8 B M12x35mm PCS.: 4 | Pos. 16 Plain washer ø30xø10,5x2,5mm PCS.: 6 | Pos. 22 Nut 8 B M12 PCS.: 2 |
| Pos. 5 Left bracket PCS.: 1 | Pos. 11 Bolt 8,8 B M10x100mm PCS.: 6 | Pos. 17 Plain washer ø10,5mm PCS.: 9 | Pos. 23 Nut 8 B M10 PCS.: 9 |
| | | | Pos. 24 Ball cover PCS.: 1 |



PPUH AUTO-HAK S.J.

Produkcja Zaczepów Kulowych
Henryk & Zbigniew Nejman
76-200 SŁUPSK ul. Słoneczna 16K
tel/fax (059) 8-414-414; 8-414-413
E-mail: office@autohak.com.pl
www.autohak.com.pl

Towing hitch (without electrical set)

Class: **A50-X** Cat. no. **T12**

Designed for:

Manufacturer: **KIA**

Model: **PREGIO**

produced since 1997

Technical data:

D-value: 9,73 kN

maximum trailer weight: **1500 kg**

maximum vertical cup mass: **70 kg**

Approval number according to Directive 94/20/EC: e20*94/20*0548*00

Foreword

This towing hitch is designed according to rules of safety traffic regulations. The towing hitch is a safety component and can be install only by qualified personnel. Any alteration or conversion of the towing hitch is prohibited and would lead to cancellation of design certification. Remove insulating compound and underseal from vehicle (if present) in the areas of the matting surfaces of the towing hitch. The vehicle manufacturer's specifications regarding trailer load and max. vertical cup mass are decisive for driving whereat values for the towing hitch cannot be exceeded.

D-value formula:

$$\frac{\text{Max trailer weight [kg]} \times \text{Max vehicle weight [kg]}}{\text{Max trailer weight [kg]} + \text{Max vehicle weight [kg]}} \times \frac{9,81}{1000} = D \text{ [kN]}$$